

LAKESIDE OUTREACH SCHOOL 2024-25 AERR



Mission

To inspire, lead, and empower success through accountability and resilience, creating a culture of lifelong learning.

Vision

High Prairie School Division will inspire students to learn, lead, and succeed in an ever-changing world.

hpsd.ca

MESSAGE FROM THE PRINCIPAL

We are excited to welcome our students, families, and community back to Lakeside Outreach School for another year of learning, growth, and connection. Having our students return, whether in person or online, brings renewed energy and purpose to our work. We care deeply about each learner who walks through our doors, and we remain committed to ensuring they feel supported, valued, and empowered to succeed.

This year is especially meaningful as we welcome a new vice principal to our administrative team. With this addition, we enter a fresh chapter of shared leadership built on the strong foundation already in place at Lakeside Outreach School. Together, we are dedicated to creating innovative learning opportunities, strengthening community partnerships, and connecting students with arts, culture, career development, and post-secondary pathways.

We are proud that Lakeside Outreach School continues to excel on the Alberta Education Assurance survey. Our results surpass both division and provincial averages in key areas such as citizenship, fostering a welcoming and safe learning environment, and ensuring students have access to the supports and services they need to thrive. This is as a result of over the past few years, we have worked intentionally to raise academic expectations and develop new systems and processes for enrollment and programming. We have also seen growth in four year completion rates, diploma exam participation, and student performance, reflecting the hard work and determination of our students and staff.

As we look ahead, we are excited to continue building on this positive momentum. We will enhance student engagement and the quality of education through new course development initiatives and expanded educational partnerships, including additional dual credit offerings. This past year, we were thrilled to welcome an educational assistant to our school support team, who played a vital role in supporting our growing number of at-risk students and responding to the diverse learning needs within our in-person and virtual programs.

Our vice principal will focus on expanding credit opportunities for students, while our teaching team pursues a professional development goal of designing a “real world” themed Math 10-3 course. This course will spiral curriculum outcomes in ways that align with current neuroscience and reflect how our students learn best. Additionally, we continue our collaboration with Roland Michener Secondary School to create more effective Knowledge and Employability options for our learners. Together, these initiatives reflect our shared commitment to nurturing a supportive, engaging, and high-quality learning environment for every student at Lakeside Outreach School.

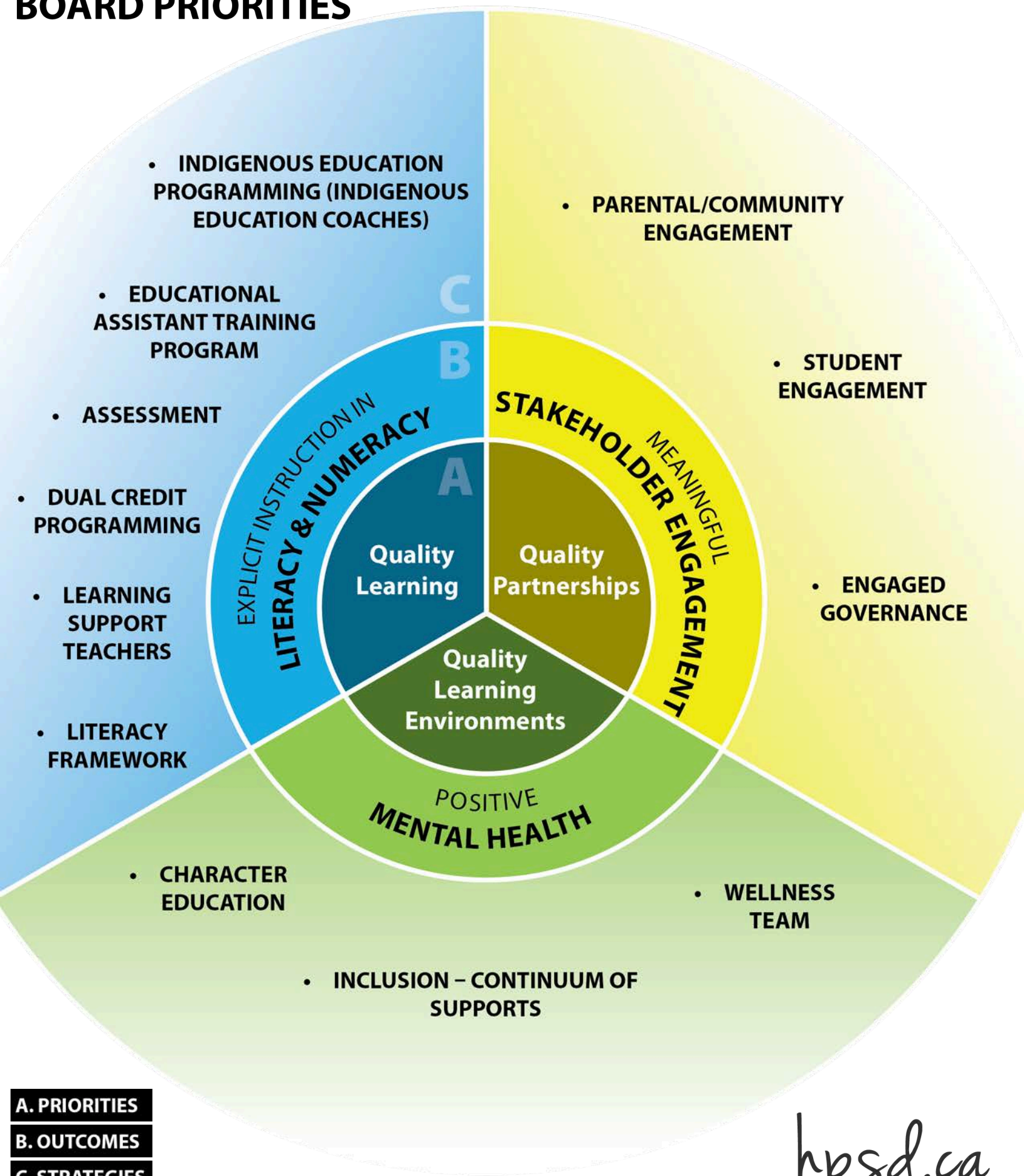
We invite you to stay connected with us on Facebook, where we enjoy highlighting our school community and celebrating student success: <https://www.facebook.com/hpsd.lso>. Please like and follow us!

Kindest regards;

Kristoffer Herbert, Principal

Tiffany Seymour, Vice Principal

HIGH PRAIRIE SCHOOL DIVISION BOARD PRIORITIES



hpsd.ca

2024-25 COMMUNITY ENGAGEMENT SUMMARY

The High Prairie School Division Board of Trustees have forged changes for the upcoming school years related to report cards, assessment policies (including no-zero practices and late assignment submissions), and reporting tools. At their strategic planning session last year, Trustees reviewed feedback from everyone who attended one of the engagement sessions (in-person and virtual) and the responses from our school/division improvement survey. Using this information, they were able to respond by the following:

PRINTED REPORT CARDS

Printed report cards will be available, effective September 2025.

NEW REPORT CARD FORMAT

A new report card format will be developed in the 2025-26 school year to improve clarity and address the concerns you raised. It will be ready for release in the 2026-27 school year.

NEW DIGITAL TOOL

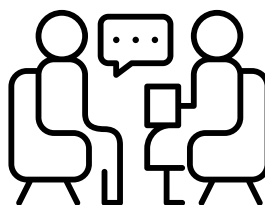
A new digital tool will launch in the 2026-27 school year to help parents more easily access their child's attendance and marks, and report cards.

REINTRODUCE ZEROS

Lastly, we will be revising our assessment process to reintroduce zeros on uncompleted projects and assignments when no excusable reason is provided.



364
SURVEY
RESPONSES



23
ENGAGEMENT
SESSIONS

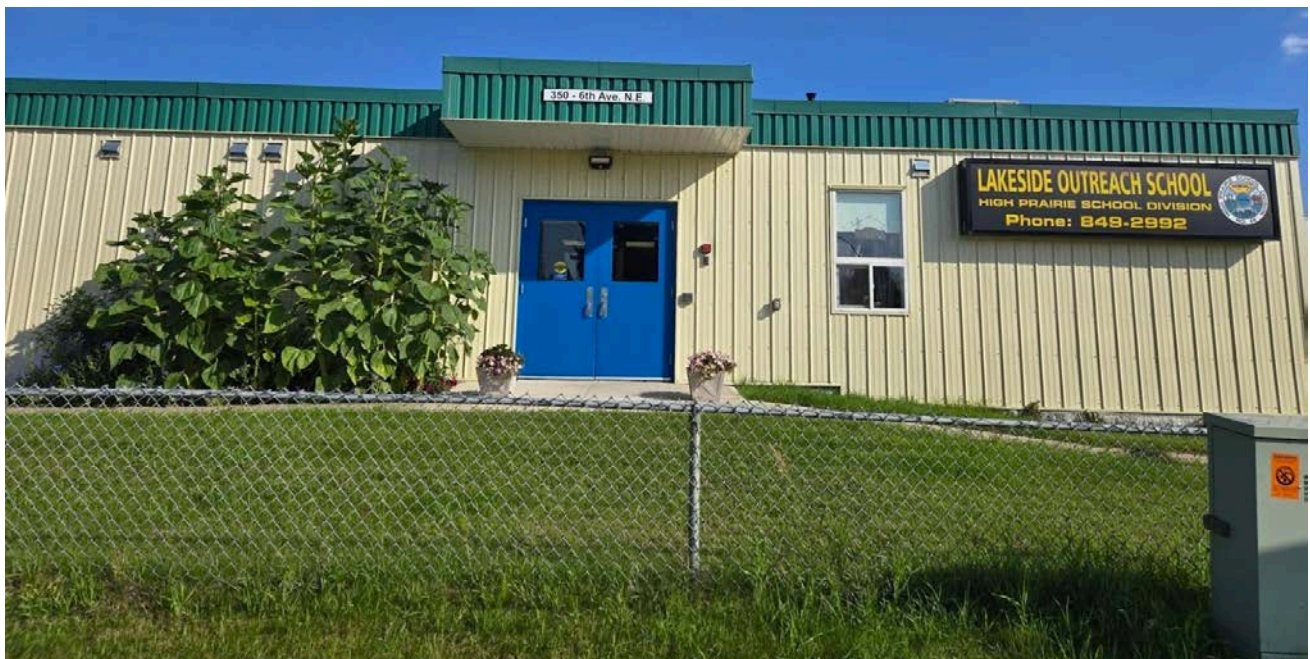
ABOUT US

Lakeside Outreach School is located in the northern Alberta town of Slave Lake, within the Municipal District of Lesser Slave River. Our town is located 257 km north of Edmonton on the southeast shore of Lesser Slave Lake at the junction of Highway 2 and Highway 88.

Our school provides a flexible, student-centered learning environment designed to meet the diverse academic and emotional needs of our learners. With individualized programming and a small, supportive setting, we are able to respond to students' unique educational, psychological, social, and employability needs in ways that traditional school models may not. In addition, we enhance learning opportunities across High Prairie School Division by increasing course availability and allowing students from other schools to access programming through Lakeside Outreach School.

This flexible approach allows students to learn at their own pace, access support when they need it, and develop the confidence required to succeed in both school and life. Our staff work closely with families, community partners, and mental health supports to remove barriers and help students re-engage with their learning in meaningful ways. Whether students require a calm and predictable environment, alternative scheduling, or additional academic scaffolding, we are committed to ensuring they feel understood, supported, and capable of achieving success.

We also take great pride in celebrating student achievement, both big and small. From recognizing course completions and personal milestones to highlighting acts of resilience and growth, we ensure students' efforts are acknowledged and valued. This culture of celebration reinforces a sense of belonging and motivates students to continue striving toward their next steps.



REQUIRED ALBERTA EDUCATION ASSURANCE MEASURES - OVERALL SUMMARY

Fall 2025 Required Alberta Education and Childcare Assurance Measures - Overall Summary

Assurance Domain	Measure	Lakeside Outreach School			Alberta			Measure Evaluation		
		Current Result	Prev Year Result	Prev 3 Year Average	Current Result	Prev Year Result	Prev 3 Year Average	Achievement	Improvement	Overall
Student Growth and Achievement	Student Learning Engagement	88.8	81.4	79.9	83.9	83.7	84.4	Very High	Maintained	Excellent
	Citizenship	89.5	86.9	87.0	79.8	79.4	80.4	Very High	Maintained	Excellent
	3-year High School Completion	16.3	52.9	24.6	81.4	80.4	81.4	Very Low	Maintained	Concern
	5-year High School Completion	36.2	10.4	15.3	87.1	88.1	87.9	Very Low	Improved	Issue
	PAT9: Acceptable	n/a	*	n/a	62.5	62.5	62.6	n/a	n/a	n/a
	PAT9: Excellence	n/a	*	n/a	15.6	15.4	15.5	n/a	n/a	n/a
	Diploma: Acceptable	66.7	67.3	56.3	82.0	81.5	80.9	Very Low	Maintained	Concern
	Diploma: Excellence	6.7	7.7	3.8	23.0	22.6	21.9	Very Low	Maintained	Concern
Teaching & Leading	Education Quality	91.3	86.5	88.4	87.7	87.6	88.2	Very High	Maintained	Excellent
Learning Supports	Welcoming, Caring, Respectful and Safe Learning Environments (WCRSLE)	93.8	87.8	89.3	84.4	84.0	84.9	Very High	Maintained	Excellent
	Access to Supports and Services	91.8	92.6	93.9	80.1	79.9	80.7	Very High	Maintained	Excellent
Governance	Parental Involvement	90.9	n/a	n/a	80.0	79.5	79.1	Very High	n/a	n/a

Fall 2025 Required Alberta Education and Childcare Assurance Measures - First Nation, Métis, and Inuit Summary

Assurance Domain	Measure	Lakeside Outreach School (FNMI)			Alberta (FNMI)			Measure Evaluation		
		Current Result	Prev Year Result	Prev 3 Year Average	Current Result	Prev Year Result	Prev 3 Year Average	Achievement	Improvement	Overall
Student Growth and Achievement	Student Learning Engagement	n/a	n/a	n/a	n/a	n/a	n/a	n/a	n/a	n/a
	Citizenship	n/a	n/a	n/a	n/a	n/a	n/a	n/a	n/a	n/a
	3-year High School Completion	0.0	50.0	50.0	59.8	58.6	58.4	Very Low	Declined Significantly	Concern
	5-year High School Completion	*	17.1	17.5	69.7	69.4	69.6	*	*	*
	PAT9: Acceptable	n/a	n/a	n/a	41.6	41.4	40.4	n/a	n/a	n/a
	PAT9: Excellence	n/a	n/a	n/a	6.3	6.1	5.7	n/a	n/a	n/a
	Diploma: Acceptable	50.0	55.6	56.9	77.5	76.9	75.9	Very Low	Maintained	Concern
	Diploma: Excellence	0.0	0.0	0.0	11.9	11.8	11.6	Very Low	Maintained	Concern
Teaching & Leading	Education Quality	n/a	n/a	n/a	n/a	n/a	n/a	n/a	n/a	n/a
Learning Supports	Welcoming, Caring, Respectful and Safe Learning Environments (WCRSLE)	n/a	n/a	n/a	n/a	n/a	n/a	n/a	n/a	n/a
	Access to Supports and Services	n/a	n/a	n/a	n/a	n/a	n/a	n/a	n/a	n/a
Governance	Parental Involvement	n/a	n/a	n/a	n/a	n/a	n/a	n/a	n/a	n/a

Fall 2025 Required Alberta Education and Childcare Assurance Measures - EAL Summary

Assurance Domain	Measure	Lakeside Outreach School (EAL)			Alberta (EAL)			Measure Evaluation		
		Current Result	Prev Year Result	Prev 3 Year Average	Current Result	Prev Year Result	Prev 3 Year Average	Achievement	Improvement	Overall
Student Growth and Achievement	Student Learning Engagement	n/a	n/a	n/a	n/a	n/a	n/a	n/a	n/a	n/a
	Citizenship	n/a	n/a	n/a	n/a	n/a	n/a	n/a	n/a	n/a
	3-year High School Completion	n/a	n/a	n/a	73.5	72.0	74.4	n/a	n/a	n/a
	5-year High School Completion	n/a	n/a	n/a	85.3	88.1	87.6	n/a	n/a	n/a
	PAT9: Acceptable	n/a	n/a	n/a	51.2	52.7	54.0	n/a	n/a	n/a
	PAT9: Excellence	n/a	n/a	n/a	10.0	10.1	10.5	n/a	n/a	n/a
	Diploma: Acceptable	*	*	n/a	67.4	66.3	66.7	*	n/a	n/a
	Diploma: Excellence	*	*	n/a	14.8	14.0	13.9	*	n/a	n/a
Teaching & Leading	Education Quality	n/a	n/a	n/a	n/a	n/a	n/a	n/a	n/a	n/a
Learning Supports	Welcoming, Caring, Respectful and Safe Learning Environments (WCRSLE)	n/a	n/a	n/a	n/a	n/a	n/a	n/a	n/a	n/a
	Access to Supports and Services	n/a	n/a	n/a	n/a	n/a	n/a	n/a	n/a	n/a
Governance	Parental Involvement	n/a	n/a	n/a	n/a	n/a	n/a	n/a	n/a	n/a

Notes:

1. Data values have been suppressed where the number of respondents/students is fewer than 6. Suppression is marked with an asterisk (*).
2. Caution should be used when interpreting high school completion rate results over time, as participation in the 2019/20 to 2021/22 Diploma Exams was impacted by the COVID-19 pandemic. In the absence of Diploma Exams, achievement level of diploma courses were determined solely by school-awarded marks.
3. Aggregated Grade 9 PAT results are based upon a weighted average of percent meeting standards (Acceptable, Excellence). The weights are the number of students enrolled in each Grade 9 course. Courses included: English Language Arts (Grades 9, 9 KAE), Français (9e année), French Language Arts (9e année), Mathematics (Grades 9, 9 KAE), Science (Grades 9, 9 KAE), Social Studies (Grades 9, 9 KAE).
4. Aggregated Diploma results are a weighted average of percent meeting standards (Acceptable, Excellence) on Diploma Examinations. The weights are the number of students writing the Diploma Exam for each course. Courses included: English Language Arts 30-1, English Language Arts 30-2, French Language Arts 30-1, Français 30-1, Mathematics 30-1, Mathematics 30-2, Chemistry 30, Physics 30, Biology 30, Science 30, Social Studies 30-1, Social Studies 30-2.
5. Participation in the PATs and Diploma Exams was impacted by the COVID-19 pandemic from 2020/21 to 2021/22. School years 2020/21 and 2021/22 are not included in the rolling 3-year average. Caution should be used when interpreting trends over time.
6. Participation in the PATs was impacted by wildfires in 2022/23 and 2023/24 and participation in Diploma Exams was impacted by wildfires in 2022/23. Caution should be used when interpreting trends over time for the province and those school authorities affected by these events.
7. Security breaches occurred over the last few days of the 2021/22 PAT administration window. Students most likely impacted by these security breaches have been excluded from the provincial cohort. All students have been included in school and school authority reporting. Caution should be used when interpreting these results.

ASSURANCE DOMAIN: STUDENT GROWTH AND ACHIEVEMENT

Student Learning Engagement – Measure Details

The percentage of teachers, parents and students who agree that students are engaged in their learning at school.

	School										Measure Evaluation			Authority										Province									
	2021		2022		2023		2024		2025					2021		2022		2023		2024		2025		2021		2022		2023		2024		2025	
	N	%	N	%	N	%	N	%	N	%	Achievement	Improvement	Overall	N	%	N	%	N	%	N	%	N	%	N	%	N	%	N	%	N	%		
Overall	6	83.0	12	83.0	20	75.3	28	81.4	27	88.8	Very High	Maintained	Excellent	877	83.1	993	85.3	994	82.8	1,196	81.8	1,242	84.0	230,956	85.6	249,740	85.1	257,214	84.4	265,079	83.7	269,076	83.9
Parent	2	*	2	*	n/a	n/a	3	*	9	96.3	Very High	n/a	n/a	90	79.2	96	90.9	98	84.9	187	83.3	310	85.4	30,994	89.0	31,694	88.7	31,862	87.3	33,209	86.7	34,444	87.6
Student	6	83.0	12	83.0	20	75.3	28	81.4	18	81.3	Very High	Maintained	Excellent	605	74.1	720	71.0	736	69.3	820	67.0	752	70.4	169,789	71.8	187,102	71.3	193,029	70.9	199,823	69.3	201,089	69.3
Teacher	2	*	2	*	2	*	2	*	3	*	*	*	*	182	96.1	177	94.1	160	94.3	189	95.2	180	96.3	30,173	96.0	30,944	95.5	32,323	95.1	32,047	95.1	33,543	95.0

Over the past year, student learning engagement at Lakeside Outreach School has increased by 7.4% from 2024, reflecting years of focused efforts to strengthen our school community. Survey participation has also grown over the past four years, with seven more parents and twelve more students completing the Alberta Education survey, indicating that students and families feel more connected and valued. To support engagement, our team has updated instructional resources to align with current knowledge of learning and neuroscience and incorporated student choice into assessment practices, allowing learners to demonstrate understanding in ways that reflect their strengths. These strategies have created a motivating, flexible environment where students actively participate and the culture of achievement continues to grow.

Citizenship – Measure Details

Percentage of teachers, parents and students who are satisfied that students model the characteristics of active citizenship.

	School										Measure Evaluation			Authority										Province									
	2021		2022		2023		2024		2025					2021		2022		2023		2024		2025		2021		2022		2023		2024		2025	
	N	%	N	%	N	%	N	%	N	%	Achievement	Improvement	Overall	N	%	N	%	N	%	N	%	N	%	N	%	N	%	N	%	N	%		
Overall	6	81.5	12	86.2	20	87.9	28	86.9	28	89.5	Very High	Maintained	Excellent	876	80.3	993	77.8	994	74.6	1,196	76.3	1,244	77.0	230,843	83.2	249,770	81.4	257,231	80.3	265,100	79.4	269,117	79.8
Parent	1	*	2	*	n/a	n/a	3	*	9	84.4	Very High	n/a	n/a	89	71.0	95	73.6	98	68.7	187	69.5	310	69.6	30,905	81.4	31,689	80.4	31,869	79.4	33,217	78.7	34,441	78.6
Student	6	81.5	12	86.2	20	87.9	28	86.9	19	94.6	Very High	Maintained	Excellent	605	76.3	721	69.6	736	66.8	820	68.1	754	70.3	169,741	74.1	187,120	72.1	193,015	71.3	199,816	69.6	201,119	70.3
Teacher	2	*	2	*	2	*	2	*	3	*	*	*	*	182	93.4	177	90.3	160	88.4	189	91.3	180	91.1	30,197	94.1	30,961	91.7	32,347	90.3	32,067	89.8	33,557	90.5

Over the past four years, participation in the Alberta Education survey has increased, with 13 additional students and eight more parents responding, enabling our active citizenship data to be fully reported. Lakeside Outreach School's student measure for active citizenship is now 24.3% higher than the provincial average, a reflection of the benefits of our small, supportive learning environment. Close relationships between staff and students, opportunities for meaningful contribution, and an emphasis on respect, responsibility, and community engagement help students take ownership of their learning and actively participate in school life.

This commitment to values is also evident as we work to develop our own mission and vision. All 22 survey respondents identified respect as a core value for Lakeside Outreach, showing that students and families feel heard, valued, and encouraged to contribute. These insights continue to guide our efforts to strengthen community, engagement, and student responsibility, ensuring a positive, inclusive, and empowering school culture.



ASSURANCE DOMAIN: STUDENT GROWTH AND ACHIEVEMENT

High School Completion Rate – Measure Details

High School Completion Rate - percentages of students who completed high school within three, four and five years of entering Grade 10.

	Lakeside Outreach School																Alberta									
	2020		2021		2022		2023		2024		Measure Evaluation						2020		2021		2022		2023		2024	
	N	%	N	%	N	%	N	%	N	%	Achievement	Improvement	Overall	N	%	N	%	N	%	N	%	N	%	N	%	
3 Year Completion	14	7.6	7	0.0	10	21.0	17	52.9	19	16.3	Very Low	Maintained	Concern	46,245	83.4	47,675	83.2	48,340	80.7	49,297	80.4	51,148	81.4			
4 Year Completion	4	*	16	6.3	10	10.3	9	23.1	20	60.4	Very Low	Improved Significantly	Acceptable	45,351	85.0	46,242	87.1	47,660	86.5	48,296	85.1	49,293	84.7			
5 Year Completion	10	11.1	5	*	16	20.2	10	10.4	9	36.2	Very Low	Improved	Issue	44,972	86.2	45,344	87.1	46,238	88.6	47,659	88.1	48,295	87.1			

	Lakeside Outreach School (FNMI)										Alberta (FNMI)												
	2020		2021		2022		2023		2024		Measure Evaluation			2020		2021		2022		2023		2024	
	N	%	N	%	N	%	N	%	N	%	Achievement	Improvement	Overall	N	%	N	%	N	%	N	%	N	%
3 Year Completion	10	0.0	4	*	4	*	8	50.0	7	0.0	Very Low	Declined Significantly	Concern	3,814	62.0	3,972	59.5	3,943	57.0	4,222	58.6	4,397	59.8
4 Year Completion	4	*	9	0.0	6	16.7	4	*	9	45.1	Very Low	Improved	Issue	3,670	63.6	3,729	68.6	3,936	65.8	3,902	65.3	4,157	65.8
5 Year Completion	7	15.0	4	*	12	18.0	6	17.1	4	*	*	*	*	3,469	68.1	3,593	68.0	3,719	71.3	3,909	69.4	3,848	69.7

	Lakeside Outreach School (EAL)																Alberta (EAL)									
	2020		2021		2022		2023		2024		Measure Evaluation						2020		2021		2022		2023		2024	
	N	%	N	%	N	%	N	%	N	%	Achievement	Improvement	Overall	N	%	N	%	N	%	N	%	N	%	N	%	
3 Year Completion	n/a	n/a	n/a	n/a	n/a	n/a	n/a	n/a	n/a	n/a	n/a	n/a	n/a	3,654	78.7	3,646	78.5	3,805	72.8	3,883	72.0	2,974	73.5			
4 Year Completion	n/a	n/a	n/a	n/a	n/a	n/a	1	*	n/a	n/a	n/a	n/a	n/a	2,993	83.0	3,278	86.4	3,337	85.0	3,247	82.2	3,202	81.1			
5 Year Completion	n/a	n/a	n/a	n/a	n/a	n/a	n/a	n/a	n/a	n/a	n/a	n/a	n/a	2,960	86.9	2,874	86.1	3,151	88.7	3,135	88.1	3,079	85.3			

Notes:

1. Data values have been suppressed where the number of respondents/students is fewer than 6. Suppression is marked with an asterisk (*).

2. Participation in the 2019/20 to 2021/22 Diploma Exams was impacted by the COVID-19 pandemic, including the cancellation of the January 2022 Diploma Exam administration. In the absence of Diploma Exams, achievement level of diploma courses were determined solely by school-awarded marks. Caution should be used when interpreting trends over time.

High school completion rates at Lakeside Outreach School are lower than provincial averages for three-five year measures, reflecting the unique context of Outreach programming. Many students come to Lakeside Outreach School because they were not successful in traditional school settings for a variety of reasons, including academic challenges, personal circumstances, or social and emotional needs. As a result, students often enter with lower credit counts and require additional time and support to complete their courses. Our flexible, individualized programming is designed to address these challenges, providing personalized pathways, one-on-one support, and opportunities to progress at a pace that meets each student's needs. While this approach may result in longer timelines for graduation, it ensures that students are not left behind and can achieve meaningful success. By focusing on engagement, skill development, and supportive learning environments, Lakeside Outreach School helps students persist, gain credits, and work toward high school completion despite the barriers they face.



ASSURANCE DOMAIN: STUDENT GROWTH AND ACHIEVEMENT

Diploma Exam Course by Course Results by Students Writing.															
		Results (in percentages)										Target		Target	
		2021		2022		2023		2024		2025		2025		2026	
		A	E	A	E	A	E	A	E	A	E	A	E	A	E
English Language Arts 30-1	School	n/a	n/a	*	*	*	*	*	*	100	0	n/a	n/a	n/a	n/a
	Authority	n/a	n/a	64.5	3.2	74.2	1	77.9	2.6	83.3	1.3				
	Province	n/a	n/a	78.8	9.4	83.7	10.5	84.2	10.1	85.3	10.9				
English Language Arts 30-2	School	n/a	n/a	87.5	0	77.8	0	100	18.8	*	*	90	15	85	8
	Authority	n/a	n/a	78.4	2.7	87	3.7	84.8	11.4	87.6	7.3				
	Province	n/a	n/a	80.8	12.3	86.2	12.7	85.7	12.9	85.6	11.3				
Mathematics 30-2	School	n/a	n/a	0	0	*	*	*	*	*	*	n/a	n/a	n/a	n/a
	Authority	n/a	n/a	27.1	0	45.1	3.9	43.9	2.4	37.7	3.3				
	Province	n/a	n/a	61.5	11.8	71.1	15.2	70.9	15.4	73.6	17.3				
Social Studies 30-1	School	n/a	n/a	*	*	*	*	n/a	n/a	n/a	n/a	n/a	n/a	n/a	n/a
	Authority	n/a	n/a	66.7	8.3	72.9	11.9	77.9	8.8	74.2	8.1				
	Province	n/a	n/a	81.5	15.8	83.5	15.9	85.2	18.7	84.6	16.8				
Social Studies 30-2	School	n/a	n/a	*	*	56.3	0	72.2	5.6	*	*	78	13	75	8
	Authority	n/a	n/a	62.5	3.6	73.3	2.6	74.8	4.1	64.5	4.3				
	Province	n/a	n/a	72.5	13.2	78.1	12.3	77.6	12.7	77.5	12.3				
Biology 30	School	n/a	n/a	*	*	10	0	12.5	0	55.6	22.2	20	3	60	25
	Authority	n/a	n/a	71.1	17.8	54.9	11	62.2	10	70.1	15.6				
	Province	n/a	n/a	74.3	25.2	82.7	32.8	83.1	33.7	82.7	34.8				
Science 30	School	n/a	n/a	n/a	n/a	n/a	n/a	*	*	*	*	n/a	n/a	n/a	n/a
	Authority	n/a	n/a	77.8	0	57.1	14.3	50	0	*	*				
	Province	n/a	n/a	75.7	17.2	79.4	23.1	81.3	24.6	79.6	26.2				

ASSURANCE DOMAIN: STUDENT GROWTH AND ACHIEVEMENT

Student Growth and Achievement (Grades 10-12)

Diploma Exam Results Course By Course Summary With Measure Evaluation

School: 0375 Lakeside Outreach School

		Lakeside Outreach School								Alberta			
Course	Measure	Achievement	Improvement	Overall	2025		Prev 3 Year Average		2025		Prev 3 Year Average		
					N	%	N	%	N	%	N	%	
English Language Arts 30-1	Diploma Examination Acceptable Standard	Very High	n/a	n/a	6	100.0	n/a	n/a	35,845	85.3	32,247	83.9	
	Diploma Examination Standard of Excellence	Very Low	n/a	n/a	6	0.0	n/a	n/a	35,845	10.9	32,247	10.3	
English Language Arts 30-2	Diploma Examination Acceptable Standard	*	*	*	5	*	13	88.9	21,398	85.6	18,166	85.9	
	Diploma Examination Standard of Excellence	*	*	*	5	*	13	9.4	21,398	11.3	18,166	12.8	
Mathematics 30-2	Diploma Examination Acceptable Standard	*	*	*	3	*	n/a	n/a	17,430	73.6	15,047	71.0	
	Diploma Examination Standard of Excellence	*	*	*	3	*	n/a	n/a	17,430	17.3	15,047	15.3	
Social Studies 30-2	Diploma Examination Acceptable Standard	*	*	*	5	*	17	64.2	27,021	77.5	22,515	77.8	
	Diploma Examination Standard of Excellence	*	*	*	5	*	17	2.8	27,021	12.3	22,515	12.5	
Biology 30	Diploma Examination Acceptable Standard	Very Low	Improved Significantly	Acceptable	9	55.6	9	11.3	25,916	82.7	23,842	82.9	
	Diploma Examination Standard of Excellence	Intermediate	Improved	Good	9	22.2	9	0.0	25,916	34.8	23,842	33.2	
Science 30	Diploma Examination Acceptable Standard	*	*	*	2	*	n/a	n/a	9,027	79.6	8,223	80.3	
	Diploma Examination Standard of Excellence	*	*	*	2	*	n/a	n/a	9,027	26.2	8,223	23.9	

School: 0375 Lakeside Outreach School (FNMI)

		Lakeside Outreach School (FNMI)						Alberta (FNMI)				
Course	Measure	Achievement	Improvement	Overall	2025		Prev 3 Year Average		2025		Prev 3 Year Average	
					N	%	N	%	N	%	N	%
English Language Arts 30-2	Diploma Examination Acceptable Standard	*	*	*	2	*	n/a	n/a	2,182	88.6	1,922	86.2
	Diploma Examination Standard of Excellence	*	*	*	2	*	n/a	n/a	2,182	9.3	1,922	10.4
Mathematics 30-2	Diploma Examination Acceptable Standard	*	*	*	1	*	n/a	n/a	932	71.6	764	65.3
	Diploma Examination Standard of Excellence	*	*	*	1	*	n/a	n/a	932	11.5	764	11.1
Social Studies 30-2	Diploma Examination Acceptable Standard	*	*	*	2	*	n/a	n/a	2,325	72.1	2,012	72.6
	Diploma Examination Standard of Excellence	*	*	*	2	*	n/a	n/a	2,325	5.7	2,012	6.0
Biology 30	Diploma Examination Acceptable Standard	*	*	*	1	*	n/a	n/a	1,112	74.0	972	72.7
	Diploma Examination Standard of Excellence	*	*	*	1	*	n/a	n/a	1,112	20.3	972	18.0

School: 0375 Lakeside Outreach School (EAL)

		Lakeside Outreach School (EAL)						Alberta (EAL)					
Course	Measure	Achievement	Improvement	Overall	2025		Prev 3 Year Average		2025		Prev 3 Year Average		
					N	%	N	%	N	%	N	%	
English Language Arts 30-2	Diploma Examination Acceptable Standard	*	*	*	1	*	n/a	n/a	2,932	67.4	2,309	70.7	
	Diploma Examination Standard of Excellence	*	*	*	1	*	n/a	n/a	2,932	4.5	2,309	5.4	

Notes:

1. Data values have been suppressed where the number of respondents/students is fewer than 6. Suppression is marked with an asterisk (*).
2. Achievement Evaluation is not calculated for courses that do not have sufficient data available, either due to too few jurisdictions offering the course or because of changes in examinations.
3. Participation in the Diploma Exams was impacted by the COVID-19 pandemic from 2020/21 to 2021/22. School years 2020/21 and 2021/22 are not included in the rolling 3-year average. Caution should be used when interpreting trends over time.
4. Participation in the Diploma Exams was impacted by wildfires in 2022/23. Caution should be used when interpreting trends over time for the province and those school authorities affected by these events.

Diploma exam results at Lakeside Outreach School have historically been limited, with data suppressed in previous years because fewer than six students wrote the exams. In 2025, the Biology 30 exam saw a marked improvement, with 55.6% of students achieving acceptable standard. While this percentage is still lower than the provincial average, it represents a significant increase of 44.3% compared to our three-year average. This improvement reflects the targeted support and personalized instruction provided in our unique outreach setting, where students often enter with gaps in prior learning or require additional time to master course content. By focusing on individualized pathways, one-on-one support, and engaging, neuroscience-informed resources, students are better prepared to succeed on assessments. The gains in Biology 30 demonstrate how flexible programming, tailored instruction, and consistent encouragement can help students overcome previous challenges and achieve meaningful progress, even in a setting where traditional metrics may initially appear low.



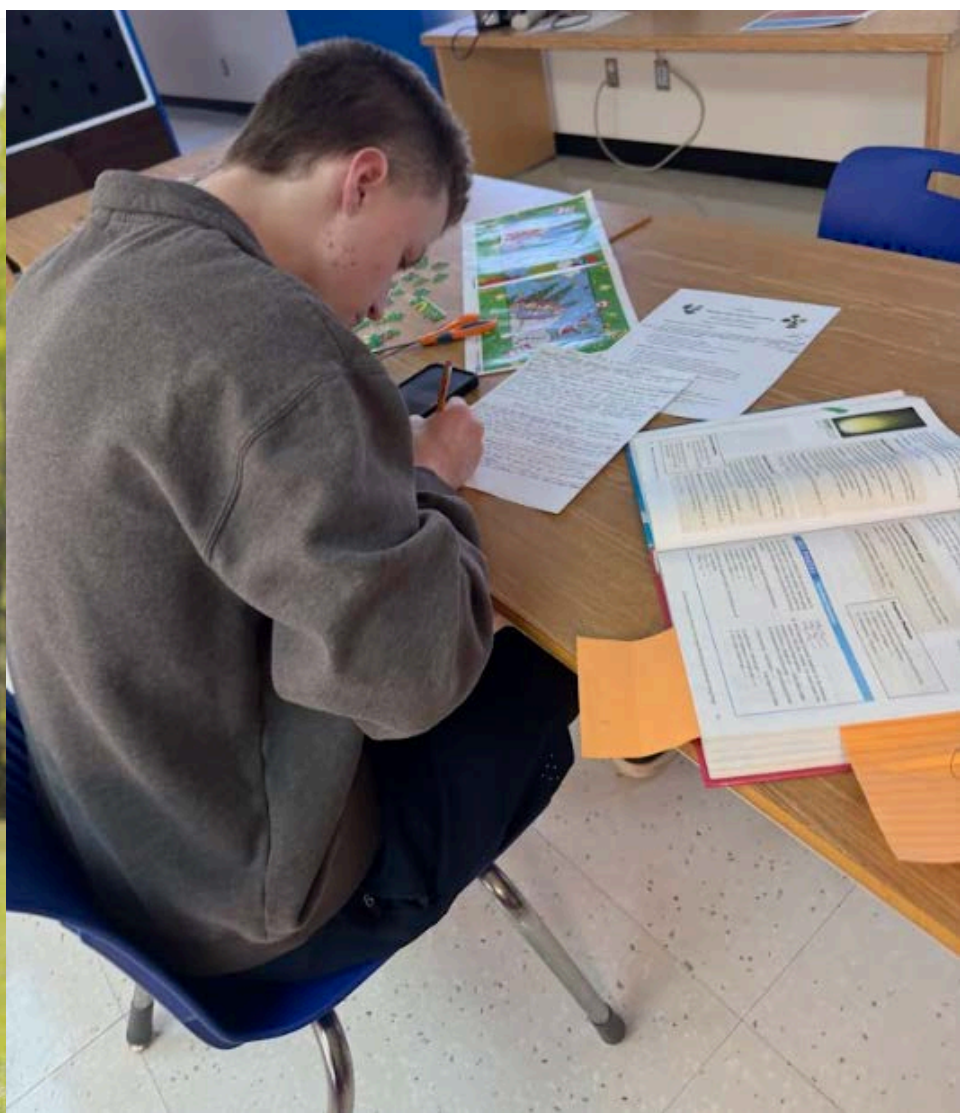
ASSURANCE DOMAIN: TEACHING AND LEADING

Education Quality – Measure Details

Percentage of teachers, parents and students satisfied with the overall quality of basic education.

	School													Authority										Province									
	2021		2022		2023		2024		2025					Measure Evaluation			2021		2022		2023		2024		2025		2021		2022		2023		2024
	N	%	N	%	N	%	N	%	N	%	Achievement	Improvement	Overall	N	%	N	%	N	%	N	%	N	%	N	%	N	%	N	%	N	%	N	%
Overall	6	77.1	12	88.6	20	90.0	28	86.5	28	91.3	Very High	Maintained	Excellent	876	86.7	994	87.8	995	84.8	1,197	85.2	1,244	86.6	230,814	89.6	249,532	89.0	257,584	88.1	265,643	87.6	269,550	87.7
Parent	2	*	2	*	n/a	n/a	3	*	9	92.6	Very High	n/a	n/a	90	80.4	96	86.9	98	79.1	187	79.8	310	82.0	31,024	86.7	31,728	86.1	31,890	84.4	33,250	83.8	34,466	84.3
Student	6	77.1	12	88.6	20	90.0	28	86.5	19	89.9	Very High	Maintained	Excellent	604	86.0	721	84.8	737	83.7	822	83.2	754	83.4	169,589	86.3	186,834	85.9	193,343	85.7	200,322	84.9	201,514	84.8
Teacher	2	*	2	*	2	*	2	*	3	*	*	*	*	182	93.7	177	91.7	160	91.6	188	92.6	180	94.3	30,201	95.7	30,970	95.0	32,351	94.4	32,071	93.9	33,570	93.9

In 2025, satisfaction with the quality of basic education at Lakeside Outreach School increased by 4.8%, reflecting the sustained impact of initiatives implemented over the past few years. Parents and students have both noted improvements in programming, support, and engagement, contributing to a more positive and meaningful learning experience. This growth in satisfaction is closely linked to the school's focus on individualized instruction, flexible pathways, and small class sizes, which allow staff to respond to the unique academic and emotional needs of each student. By maintaining and building on previous efforts such as updating resources, enhancing curriculum, and incorporating student choice into learning and assessment, Lakeside Outreach School has created an environment where students feel supported, empowered, and capable of success. The increase in satisfaction demonstrates that consistent attention to personalized education, strong staff-student relationships, and meaningful engagement can lead to measurable improvements in how the school community perceives the overall quality of education.



ASSURANCE DOMAIN: TEACHING AND LEADING - LOCAL COMPONENT

PROFESSIONAL LEARNING, SUPERVISION AND EVALUATION

Professional Growth Plans

In the Fall, teachers and administrators meet with the school principal to share and review their professional growth plans. During this meeting, they discuss the effectiveness of their strategies, how they will measure progress toward goals, the feasibility of timelines, follow-up processes throughout the school year, and any support the administration can provide. This initial meeting, combined with ongoing follow-up, reinforces accountability and highlights the importance of developing and maintaining meaningful professional growth plans.

Ongoing Supervision and Growth

The vice principal, who also serves as a teacher, provides day-to-day supervision and follow-up for staff. Teachers and the vice principal collaborate on capacity-building projects throughout the year, supporting each other's professional growth. This year, Lakeside Outreach School's professional development plan focuses on exploring new approaches to delivering Math curricula and improving numeracy outcomes.

Collaborative Response

All staff participate in monthly School Support Team Meetings (SSTMs) to address key issues in the learning community and share strategies from diverse perspectives. While these meetings generate actionable items, their primary value lies in building staff capacity by leveraging expertise within the school.

Evaluation

The principal oversees teacher evaluations, while the on-site vice principal, in collaboration with the principal, evaluates support staff.



ASSURANCE DOMAIN: LEARNING SUPPORTS

Access to Supports & Services – Measure Details

The percentage of teachers, parents and students who agree that students have access to the appropriate supports and services at school.

	School										Measure Evaluation			Authority								Province											
	2021		2022		2023		2024		2025					2021		2022		2023		2024		2025		2021		2022		2023		2024		2025	
	N	%	N	%	N	%	N	%	N	%	Achievement	Improvement	Overall	N	%	N	%	N	%	N	%	N	%	N	%	N	%	N	%	N	%		
Overall	6	94.4	12	94.3	20	94.9	28	92.6	28	91.8	Very High	Maintained	Excellent	876	83.2	992	83.2	993	81.4	1,197	81.6	1,242	84.0	230,761	82.6	249,570	81.6	256,994	80.6	264,733	79.9	268,786	80.1
Parent	2	*	2	*	n/a	n/a	3	*	9	88.9	Very High	n/a	n/a	90	74.7	96	78.4	98	76.5	187	74.5	310	77.4	30,936	78.9	31,684	77.4	31,847	75.7	33,177	75.4	34,400	75.5
Student	6	94.4	12	94.3	20	94.9	28	92.6	19	94.6	Very High	Maintained	Excellent	604	84.1	719	81.6	735	81.0	821	81.1	752	82.2	169,631	80.2	186,935	80.1	192,805	79.9	199,516	78.7	200,841	78.7
Teacher	2	*	2	*	2	*	2	*	3	*	*	*	*	182	90.8	177	89.7	160	86.7	189	89.2	180	92.3	30,194	88.7	30,951	87.3	32,342	86.2	32,040	85.6	33,545	86.0

Overall satisfaction with access to appropriate supports and services at Lakeside Outreach School saw a slight decrease of 0.8% in 2025, yet remains 11.7% higher than the provincial average. This demonstrates that, despite minor fluctuations, our school continues to provide a supportive and effective learning environment. We are particularly excited to highlight our dedicated full-time educational assistant, who has provided additional support for our students' diverse academic and emotional needs. Students also have access to a part-time career coach, an Indigenous education coach, and on-call wellness support, ensuring they receive guidance, mentorship, and assistance to help them succeed both inside and outside the classroom.

Welcoming, Caring, Respectful and Safe Learning Environments – Measure Details

The percentage of teachers, parents and students who agree that their learning environments are welcoming, caring, respectful and safe.

	School										Measure Evaluation			Authority										Province									
	2021		2022		2023		2024		2025					2021		2022		2023		2024		2025		2021		2022		2023		2024		2025	
	N	%	N	%	N	%	N	%	N	%	Achievement	Improvement	Overall	N	%	N	%	N	%	N	%	N	%	N	%	N	%	N	%	N	%		
Overall	6	90.4	12	93.5	20	86.6	28	87.8	28	93.8	Very High	Maintained	Excellent	877	84.7	994	83.3	994	80.3	1,197	81.3	1,245	82.5	231,091	87.8	249,941	86.1	257,391	84.7	265,321	84.0	269,282	84.4
Parent	2	*	2	*	n/a	n/a	3	*	9	94.3	Very High	n/a	n/a	90	79.0	96	81.3	98	77.5	187	77.8	310	78.7	30,980	88.2	31,715	86.9	31,885	85.6	33,232	85.3	34,452	85.2
Student	6	90.4	12	93.5	20	86.6	28	87.8	19	93.4	Very High	Maintained	Excellent	605	79.3	721	74.3	736	72.5	821	73.5	755	74.6	169,900	79.8	187,258	77.7	193,156	76.6	200,020	75.2	201,268	75.7
Teacher	2	*	2	*	2	*	2	*	3	*	*	*	*	182	95.7	177	94.4	160	90.7	189	92.5	180	94.1	30,211	95.3	30,968	93.6	32,350	92.0	32,069	91.6	33,562	92.3

Lakeside Outreach's measure for welcoming, caring, respectful, and safe learning environments is 9.4% higher than the provincial data, and much of this success can be linked to the strong role played by education assistants and the school's high behaviour expectations. Education assistants build consistent, trusting relationships with students by offering individualized support, early intervention when problems arise, and steady guidance throughout the day. Because students know that an adult is always available to help them regulate, problem-solve, or refocus, they feel safer and more supported in the school environment. At the same time, Lakeside Outreach maintains clear, firm, and fair behaviour expectations that are reinforced daily by all staff. Students understand what is expected of them, and when expectations are consistent, they experience fewer conflicts and more positive interactions. The combination of strong adult support and a structured, respectful school culture creates a setting where students genuinely feel valued, cared for, and safe.

ASSURANCE DOMAIN: LEARNING SUPPORTS - LOCAL COMPONENT

ACCESS TO A CONTINUUM OF SUPPORTS AND SERVICES

HPSD supports inclusion through a multi-tiered approach. All students have a continuum of needs that can be met, to a varying degree, by differentiated instruction. School-based Learning Support Teachers (LSTs) engage in coaching conversations with staff regarding the ways and means of supporting a differentiated program of studies.

Each HPSP school annually reviews their response to intervention, inclusive of:

- the universal, targeted, and intensive supports available,
- the process by which teachers collaborate to implement strategies,
- support networks for updates about student progression,
- display their continuum of supports in a designated area where staff have easy access.



FIRST NATION, MÉTIS, AND INUIT PROGRAMMING (INDIGENOUS EDUCATION COACHES)

The Indigenous Education Coaching team employs a universal education model. The goal of this model is for all students to have a deep understanding of our Canadian history, including Indigenous cultures, perspectives, Treaties and Land agreements, the Legacy of Residential Schools, and the contributions of Indigenous Culture in shaping our Canadian identity.

This model supports all staff in meeting the Teaching Quality Standard (TQS) #5 through professional development sessions designed to build the capacity of our teachers to accurately and confidently deliver Indigenous materials in their classrooms. They are moving future generations forward in creating a more inclusive Canada. A continued and focused area for the Indigenous Education Team is to promote and advance calls to action in Truth and Reconciliation.

This model allows Indigenous learners to see themselves reflected in the curriculum. Classroom content across subject areas from Kindergarten to Grade 12 will be respectful, authentic, and genuine and will include consultations with Elders and Knowledge Keepers within our local context.

SUPPLEMENTAL MEASURES

Diploma Examination Participation Rate – Measure Details

Percentage of students writing 0 to 6 or more Diploma Examinations by the end of their 3rd year of high school.

	School					Authority					Province				
	2020	2021	2022	2023	2024	2020	2021	2022	2023	2024	2020	2021	2022	2023	2024
N	14	7	10	17	19	246	263	250	271	259	46,245	47,675	48,340	49,297	51,148
% Writing 0 Exams	n/a	n/a	79.0	52.9	67.4	n/a	n/a	44.3	33.0	36.4	n/a	n/a	20.9	14.4	13.7
% Writing 1+ Exams	n/a	n/a	21.0	47.1	32.6	n/a	n/a	55.7	67.0	63.6	n/a	n/a	79.1	85.6	86.3
% Writing 2+ Exams	n/a	n/a	10.5	47.1	21.7	n/a	n/a	34.6	60.7	60.1	n/a	n/a	54.4	82.5	83.8
% Writing 3+ Exams	n/a	n/a	0.0	11.8	5.4	n/a	n/a	11.0	36.9	34.0	n/a	n/a	20.0	64.7	65.3
% Writing 4+ Exams	n/a	n/a	0.0	11.8	0.0	n/a	n/a	0.8	28.3	26.5	n/a	n/a	3.5	52.7	54.5
% Writing 5+ Exams	n/a	n/a	0.0	5.9	0.0	n/a	n/a	0.0	16.4	17.2	n/a	n/a	0.5	31.6	35.4
% Writing 6+ Exams	n/a	n/a	0.0	5.9	0.0	n/a	n/a	0.0	6.7	5.5	n/a	n/a	0.0	8.4	10.8

Although we continue to have a high percentage of students who have not written their diploma exams by the end of their third year of high school, this must be understood within the context of our unique student population. Many of our students are highly transient, frequently moving between schools or programs, which disrupts their ability to follow a traditional exam timeline. Our student body also includes individuals coming from a variety of high-school programs, many of whom find traditional learning environments challenging and need additional time, flexibility, and support to succeed. These factors naturally extend the timeline for diploma completion and reflect the diverse needs of the learners we serve. For our students, success often looks different and may not follow the standard pace, but it remains meaningful and representative of real growth.

Drop Out Rate – Measure Details

Drop Out Rate - annual dropout rate of students aged 14 to 18

Drop Out Rate	School										Authority										Province																																																																																																																																																																																																																																																																																																																																																																																																																																																																																																																																																																																																																																																																																																																																																																																																																																																																																																																																																																																																																																																																																																																																																																																																																																																																																																																																																																																																																																																																																																																																																																																																																																																																																																																																																																																																																																																																																																																																																																																																																																																																																																																																																																																																																																																																																																																																																																																																																																																																																																																																																																																																																																																																																																																																																																																																																																																																																																																																																																																																																																																																																																																																																																																																																																																																																																																																																								
	2020					2021					2022					2023					2024					2020					2021					2022					2023					2024																																																																																																																																																																																																																																																																																																																																																																																																																																																																																																																																																																																																																																																																																																																																																																																																																																																																																																																																																																																																																																																																																																																																																																																																																																																																																																																																																																																																																																																																																																																																																																																																																																																																																																																																																																																																																																																																																																																																																																																																																																																																																																																																																																																																																																																																																																																																																																																																																																																																																																																																																																																																																																																																																																																																																																																																																																																																																																																																																																																																																																																																																																																																																																																																																																																																																																																															
	Measure Evaluation																																																																																																																																																																																																																																																																																																																																																																																																																																																																																																																																																																																																																																																																																																																																																																																																																																																																																																																																																																																																																																																																																																																																																																																																																																																																																																																																																																																																																																																																																																																																																																																																																																																																																																																																																																																																																																																																																																																																																																																																																																																																																																																																																																																																																																																																																																																																																																																																																																																																																																																																																																																																																																																																																																																																																																																																																																																																																																																																																																																																																																																																																																																																																																																																																																																																																																																																																																												

Lakeside Outreach School is seeing an increasing number of full-time students enrolling each year. Along with this shift in student population, our data shows significant improvement in dropout rates, which declined by nearly 16% between 2022 and 2023. This year, we have observed a slight increase of 2.7% in 2024, which may be attributed to the transient nature of our student population, with some students transferring from other schools or programs mid-year, or requiring additional time to complete their coursework. To build on these gains, we are ensuring that the career coach is more fully involved in the enrollment process while also connecting students to community and leadership opportunities. Students can participate in team sports at Roland Michener Secondary School through our partnership, take part in hands-on cooking labs, engage in daily physical education activities, and continue their core academic studies. Teachers actively explore Career and Technology Studies (CTS) options and promote them through creative campaigns, helping students discover new skills and interests. Initiatives like 'Junior PD Days,' which bring students together with local experts, and the 'CALM Blitz' program, designed to develop career readiness, provide meaningful, hands-on learning experiences that keep students engaged and motivated.



SUPPLEMENTAL MEASURES

Lifelong Learning – Measure Details

Percentage of teacher and parent satisfaction that students demonstrate the knowledge, skills and attitudes necessary for lifelong learning.

	School									Measure Evaluation						Authority										Province													
	2021		2022		2023		2024		2025		Achievement			Improvement			Overall			2021		2022		2023		2024		2025		2021		2022		2023		2024		2025	
	N	%	N	%	N	%	N	%	N	%									N	%	N	%	N	%	N	%	N	%	N	%	N	%	N	%	N	%	N	%	
Overall	n/a	n/a	n/a	n/a	n/a	n/a	n/a	n/a	9	88.9	Very High			n/a	265	76.9	269	79.5	251	78.8	363	78.0	473	79.7	59,478	82.1	60,822	81.0	62,032	80.4	62,712	79.9	65,274	80.8					
Parent	2	*	2	*	n/a	n/a	3	*	9	88.9	Very High			n/a	84	63.9	94	69.3	95	69.1	177	67.2	297	70.6	29,693	75.3	30,314	74.6	30,381	73.4	31,458	73.3	32,542	74.5					
Teacher	2	*	2	*	2	*	2	*	3	*	*	*	*	*	181	89.8	175	89.7	156	88.5	186	88.8	176	88.7	29,785	88.9	30,508	87.4	31,651	87.3	31,254	86.6	32,732	87.1					

Lakeside Outreach School's lifelong learning measure, which reflects the percentage of students demonstrating the knowledge, skills, and attitudes necessary for lifelong learning, is 8.1% higher than the provincial average. This success can be attributed to our focus on individualized support, high expectations, and varied learning opportunities that encourage students to take ownership of their education. Programs such as Career and Technology Studies, hands-on labs, community engagement, and leadership initiatives help students develop critical thinking, problem-solving, and self-management skills. By providing a supportive environment that values personal growth and exploration, Lakeside Outreach ensures students are well-prepared to continue learning beyond school and apply these skills throughout their lives.

Program of Studies – Measure Details

Percentage of teachers, parents and students satisfied with the opportunity for students to receive a broad program of studies including fine arts, career, technology, and health and physical education.

	School										Measure Evaluation			Authority										Province									
	2021		2022		2023		2024		2025					2021		2022		2023		2024		2025		2021		2022		2023		2024		2025	
	N	%	N	%	N	%	N	%	N	%	Achievement	Improvement	Overall	N	%	N	%	N	%	N	%	N	%	N	%	N	%	N	%	N	%		
	N	%	N	%	N	%	N	%	N	%	Achievement	Improvement	Overall	N	%	N	%	N	%	N	%	N	%	N	%	N	%	N	%	N	%		
Overall	6	63.6	12	71.6	20	73.6	28	73.5	27	79.0	High	Maintained	Good	594	80.5	694	82.4	696	82.4	855	84.3	919	83.0	157,680	81.9	172,339	82.9	179,589	82.9	184,554	82.8	190,222	83.0
Parent	2	*	2	*	n/a	n/a	3	*	9	82.5	Very High	n/a	n/a	90	78.6	95	81.5	98	78.5	187	84.0	307	81.2	30,817	81.7	31,625	82.4	31,780	82.2	33,145	82.3	34,368	82.4
Student	6	63.6	12	71.6	20	73.6	28	73.5	18	75.6	Very High	Maintained	Excellent	322	76.2	422	77.8	438	79.1	479	77.7	432	78.3	96,676	74.9	109,776	76.9	115,487	77.4	119,382	76.7	122,315	77.0
Teacher	2	*	2	*	2	*	2	*	3	*	*	*	*	182	86.8	177	87.9	160	89.6	189	91.2	180	89.5	30,187	89.2	30,938	89.3	32,322	89.3	32,027	89.2	33,539	89.5

Lakeside Outreach School's program of studies measure, reflecting satisfaction with access to a broad curriculum including fine arts, Career and Technology Studies, and health and physical education, is 4% lower than the provincial average. This is closely tied to the unique needs of our student population, as our percentage of at-risk students is 11.3% higher than the provincial average. Many students require individualized schedules and additional support, which can limit access to some electives or enrichment courses. Outreach programming exists specifically to support these students, providing flexible learning options, hands-on experiences, and targeted interventions. Despite these challenges, we ensure students have meaningful opportunities through partnerships, off-campus programs such as Work Experience and RAP, field trips, workshops, dual-credit courses, and in-person or self-directed lessons. Fine arts are promoted through cross-curricular assignments and courses like Art 10, while our partnership with Roland Michener Secondary School expands access to additional courses, ensuring students still receive a rich and relevant education.

Program of Studies - At Risk Students – Measure Details

Percentage of teacher, parent and student agreement that programs for children at risk are easy to access and timely.

	School										Measure Evaluation			Authority										Province									
	2021		2022		2023		2024		2025					2021		2022		2023		2024		2025		2021		2022		2023		2024		2025	
	N	%	N	%	N	%	N	%	N	%	Achievement	Improvement	Overall	N	%	N	%	N	%	N	%	N	%	N	%	N	%	N	%	N	%		
	N	%	N	%	N	%	N	%	N	%	Achievement	Improvement	Overall	N	%	N	%	N	%	N	%	N	%	N	%	N	%	N	%	N	%		
Overall	6	94.4	12	94.3	20	94.9	28	92.6	28	91.8	Very High	Maintained	Excellent	876	83.4	992	84.2	993	81.6	1,197	81.8	1,242	83.4	230,686	82.7	249,524	81.9	256,932	81.2	264,651	80.6	268,717	80.5
Parent	2	*	2	*	n/a	n/a	3	*	9	88.9	Very High	n/a	n/a	90	72.1	96	78.1	98	72.5	187	70.9	310	74.5	30,874	76.7	31,643	75.3	31,805	73.7	33,110	73.5	34,352	73.5
Student	6	94.4	12	94.3	20	94.9	28	92.6	19	94.6	Very High	Maintained	Excellent	604	84.1	719	81.6	735	81.0	821	81.1	752	82.2	169,631	80.2	186,935	80.1	192,805	79.9	199,516	78.7	200,841	78.7
Teacher	2	*	2	*	2	*	2	*	3	*	*	*	*	182	93.9	177	92.8	160	91.4	189	93.4	180	93.7	30,181	91.2	30,946	90.3	32,322	89.9	32,025	89.5	33,524	89.4

Lakeside Outreach School's percentage of at-risk students is 11.3% higher than the provincial average, reflecting the demographics and specific needs of our student population. Our outreach programming is designed specifically to support students who face challenges in traditional school settings, including those who are transient, require additional academic or social support, or struggle to stay engaged. By providing individualized learning plans, flexible scheduling, and targeted interventions, Lakeside Outreach ensures these students have the resources and guidance they need to succeed. While our at-risk population is higher than average, our programs are tailored to help students overcome barriers, build confidence, and achieve meaningful academic and personal growth.

SUPPLEMENTAL MEASURES

Rutherford Eligibility Rate – Measure Details

Percentage of Grade 12 students eligible for a Rutherford Scholarship.

	School													Authority										Province											
	2020		2021		2022		2023		2024		Measure Evaluation			2020		2021		2022		2023		2024		2020		2021		2022		2023		2024			
	N	%	N	%	N	%	N	%	N	%	Achievement	Improvement	Overall	N	%	N	%	N	%	N	%	N	%	N	%	N	%	N	%	N	%	N	%		
Rutherford Scholarship Eligibility Rate	40	17.5	35	22.9	27	25.9	31	22.6	29	24.1	Very Low	Maintained	Concern	307	45.9	305	48.5	296	51.7	302	48.3	293	46.1	59,357	68.0	58,631	70.2	57,307	71.9	58,930	70.7	63,342	69.4		

Rutherford eligibility rate details.

Reporting School Year	Total Students	Grade 10 Rutherford		Grade 11 Rutherford		Grade 12 Rutherford		Overall	
		Number of Students Eligible	Percent of Students Eligible	Number of Students Eligible	Percent of Students Eligible	Number of Students Eligible	Percent of Students Eligible	Number of Students Eligible	Percent of Students Eligible
2020	40	5	12.5	3	7.5	2	5.0	7	17.5
2021	35	7	20.0	3	8.6	0	0.0	8	22.9
2022	27	6	22.2	4	14.8	4	14.8	7	25.9
2023	31	6	19.4	2	6.5	2	6.5	7	22.6
2024	29	5	17.2	5	17.2	0	0.0	7	24.1

Lakeside Outreach School has maintained a 'Rutherford Eligibility Rate' between 22% and 26% over the past three years, showing improvement from 17.5% in 2020. This measure is influenced by several factors, including transient families who enroll in multiple schools throughout high school and students who join outreach programs as an intervention for severe attendance issues or after expulsion from other High Prairie School Division schools, often arriving with gaps in academic success. Wellness concerns can also distract some students from focusing on academics. To continue growth in 2025, we are implementing a clear communication campaign about this scholarship, encouraging students to use teacher feedback to improve assignments, and supporting them in applying for other scholarships. Additionally we are looking at additional supports such as a post-secondary application night to help our students and their families as they transition to life after high school.

Safe and Caring – Measure Details

Percentage of teacher, parent and student agreement that: students are safe at school, are learning the importance of caring for others, are learning respect for others and are treated fairly in school.

	School										Measure Evaluation			Authority										Province											
	2021		2022		2023		2024		2025					2021		2022		2023		2024		2025		2021		2022		2023		2024		2025			
	N	%	N	%	N	%	N	%	N	%	Achievement	Improvement	Overall	N	%	N	%	N	%	N	%	N	%	N	%	N	%	N	%	N	%	N	%		
Overall	6	96.6	12	95.0	20	90.9	28	89.4	28	95.5	Very High	Maintained	Excellent	877	87.3	994	87.4	994	84.4	1,196	85.0	1,244	85.5	230,987	90.0	249,835	88.8	257,278	87.5	265,150	87.1	269,159	87.3		
Parent	2	*	2	*	n/a	n/a	3	*	9	95.3	Very High	n/a	n/a	90	81.6	96	86.8	98	82.5	187	81.6	310	82.4	30,969	90.5	31,707	89.5	31,879	88.1	33,225	88.0	34,446	87.9		
Student	6	96.6	12	95.0	20	90.9	28	89.4	19	95.7	Very High	Maintained	Excellent	605	83.5	721	79.6	736	78.1	820	79.2	754	79.2	169,813	84.0	187,165	82.5	193,049	81.5	199,865	80.4	201,157	80.6		
Teacher	2	*	2	*	2	*	2	*	3	*	*	*	*	182	96.7	177	95.7	160	92.7	189	94.2	180	94.8	30,205	95.4	30,963	94.3	32,350	93.0	32,060	92.9	33,556	93.4		

Lakeside Outreach School consistently scores around 95% on the safe and caring schools measure, reflecting the strong culture of respect and support within our building. A key factor in this success is the intentional focus on respect as a core value, which was included on every values survey completed by both staff and students. By clearly identifying respect as a shared expectation, the school fosters positive interactions, predictable routines, and a safe environment where students feel valued. Staff emphasize respectful communication, consistent boundaries, and genuine care, while students recognize that their voices matter. This shared commitment contributes to a stable, welcoming atmosphere and our consistently high results.

Satisfaction with Program Access – Measure Details

Percentage of teacher, parent and student satisfaction with the accessibility, effectiveness and efficiency of programs and services for students in their community.

	School										Authority										Province																																																																																																																																																																																																																																																																																																																																																																																																																																																																																																																																																																																																																																																																																																																																																																																																																																																																																																																																																																																																																																																																																																																																																																																																																																																																											
	2021					2022					2023					2024					2025					2021					2022					2023					2024					2025																																																																																																																																																																																																																																																																																																																																																																																																																																																																																																																																																																																																																																																																																																																																																																																																																																																																																																																																																																																																																																																																																																																																																																																																																																																		
	N	%	N	%	N	%	N	%	N	%	N	%	N	%	N	%	N	%	N	%	N	%	N	%	N	%	N	%	N	%	N	%	N	%	N	%	N	%	N	%	N	%	N	%	N	%	N	%	N	%	N	%	N	%	N	%	N	%	N	%	N	%	N	%	N	%	N	%	N	%	N	%	N	%	N	%	N	%	N	%	N	%	N	%	N	%	N	%	N	%	N	%	N	%	N	%	N	%	N	%	N	%	N	%	N	%	N	%	N	%	N	%	N	%	N	%	N	%	N	%	N	%	N	%	N	%	N	%	N	%	N	%	N	%	N	%	N	%	N	%	N	%	N	%	N	%	N	%	N	%	N	%	N	%	N	%	N	%	N	%	N	%	N	%	N	%	N	%	N	%	N	%	N	%	N	%	N	%	N	%	N	%	N	%	N	%	N	%	N	%	N	%	N	%	N	%	N	%	N	%	N	%	N	%	N	%	N	%	N	%	N	%	N	%	N	%	N	%	N	%	N	%	N	%	N	%	N	%	N	%	N	%	N	%	N	%	N	%	N	%	N	%	N	%	N	%	N	%	N	%	N	%	N	%	N	%	N	%	N	%	N	%	N	%	N	%	N	%	N	%	N	%	N	%	N	%	N	%	N	%	N	%	N	%	N	%	N	%	N	%	N	%	N	%	N	%	N	%	N	%	N	%	N	%	N	%	N	%	N	%	N	%	N	%	N	%	N	%	N	%	N	%	N	%	N	%	N	%	N	%	N	%	N	%	N	%	N	%	N	%	N	%	N	%	N	%	N	%	N	%	N	%	N	%	N	%	N	%	N	%	N	%	N	%	N	%	N	%	N	%	N	%	N	%	N	%	N	%	N	%	N	%	N	%	N	%	N	%	N	%	N	%	N	%	N	%	N	%	N	%	N	%	N	%	N	%	N	%	N	%	N	%	N	%	N	%	N	%	N	%	N	%	N	%	N	%	N	%	N	%	N	%	N	%	N	%	N	%	N	%	N	%	N	%	N	%	N	%	N	%	N	%	N	%	N	%	N	%	N	%	N	%	N	%	N	%	N	%	N	%	N	%	N	%	N	%	N	%	N	%	N	%	N	%	N	%	N	%	N	%	N	%	N	%	N	%	N	%	N	%	N	%	N	%	N	%	N	%	N	%	N	%	N	%	N	%	N	%	N	%	N	%	N	%	N	%	N	%	N	%	N	%	N	%	N	%	N	%	N	%	N	%	N	%	N	%	N	%	N	%	N	%	N	%	N	%	N	%	N	%	N	%	N	%	N	%	N	%	N	%	N	%	N	%	N	%	N	%	N	%	N	%	N	%	N	%	N	%	N	%	N	%	N	%	N	%	N	%	N	%	N	%	N	%	N	%	N	%	N	%	N	%	N	%	N	%	N	%	N	%	N	%	N	%	N	%	N	%	N	%	N	%	N	%	N	%	N	%	N	%	N	%	N	%	N	%	N	%	N	%	N	%	N	%	N	%	N	%	N	%	N	%	N	%	N	%	N	%	N	%	N	%	N	%	N	%	N	%	N	%	N	%	N	%	N	%	N	%	N	%	N	%	N	%	N	%	N	%	N	%	N	%	N	%	N	%	N	%	N	%	N	%	N	%	N	%	N	%	N	%	N	%	N	%	N	%	N	%	N	%	N	%	N	%	N	%	N	%	N	%	N	%	N	%	N	%	N	%	N	%	N	%	N	%	N	%	N	%	N	%	N	%	N	%	N	%	N	%	N	%	N	%	N	%	N	%	N	%	N	%	N	%	N	%	N	%	N	%	N	%	N	%	N	%	N	%	N	%	N	%	N	%	N	%	N	%	N	%	N	%	N	%	N	%	N	%	N	%	N	%	N	%	N	%	N	%	N	%	N	%	N	%	N	%	N	%	N	%	N	%	N	%	N	%	N	%	N	%	N	%	N	%	N	%	N	%	N	%	N	%	N	%	N	%	N	%	N	%	N	%	N	%	N	%	N	%	N	%	N	%	N	%	N	%	N	%	N	%	N	%	N	%	N	%	N	%	N	%	N	%	N	%	N	%	N	%	N	%	N	%	N	%	N	%	N	%	N	%	N	%	N	%	N	%	N	%	N	%	N	%	N	%	N	%	N	%	N	%	N	%	N	%	N	%	N	%	N	%	N	%	N	%	N	%	N	%	N	%	N	%	N	%	N	%	N	%	N	%	N	%	N	%	N	%	N	%	N	%	N	%	N	%	N	%	N	%	N	%	N	%	N	%	N	%	N	%	N	%	N	%	N	%	N	%	N	%	N	%	N	%	N	%	N	%	N	%	N	%	N	%	N	%	N	%	N	%	N	%	N	%	N	%	N	%	N	%	N	%	N	%	N	%	N	%	N	%	N	%	N	%	N	%	N	%	N	%	N	%	N	%	N	%	N	%	N	%	N	%	N	%	N	%	N	%	N	%	N	%	N	%	N	%	N	%	N	%	N	%	N	%	N	%	N	%	N	%	N	%	N	%	N	%	N	%	N	%	N	%	N	%	N	%	N	%	N	%	N	%	N	%	N	%	N	%	N	%	N	%	N	%	N	%	N	%	N	%	N	%	N	%	N	%	N	%	N	%	N	%	N	%	N	%	N	%	N	%	N	%	N	%	N	%	N	%	N	%	N	%	N	%	N	%	N	%	N	%	N	%	N	%	N	%	N	%	N	%	N	%	N	%	N	%	N	%	N	%	N	%	N	%	N	%	N	%	N	%	N	%	N	%	N	%	N	%	N	%	N	%	N	%	N	%	N	%	N	%	N	%	N	%	N	%	N	%	N	%	N	%	N	%	N	%	N	%	N	%	N	%

Lakeside Outreach School maintains a strong partnership with Roland Michener Secondary School to better support the diverse learning needs of high school students in Slave Lake and surrounding areas. Together, we offer shared learning opportunities, collaborate on Tier 3 supports for at-risk students, and provide access to graduation, leadership, and athletic programs at Roland Michener. Students also connect with local venues, services, and community partners through athletics, Jr. PD Day activities, the CALM Blitz, and various work-experience and volunteer opportunities. A student handbook outlines available community supports, and our school wellness coach provides one-on-one guidance and referrals for students and families.

SUPPLEMENTAL MEASURES

School Improvement – Measure Details

Percentage of teachers, parents and students indicating that their school and schools in their jurisdiction have improved or stayed the same the last three years.

	School										Authority										Province																																																																																																																																																																																																																																																																																																																																																																																																																																																																																																																																																																																																																																																																																																																																																																																																																																																																																																																																																																																																																																																																																																																																																																																																																																																																																																																																																							
	2021					2022					2023					2024					2025					2021					2022					2023					2024					2025																																																																																																																																																																																																																																																																																																																																																																																																																																																																																																																																																																																																																																																																																																																																																																																																																																																																																																																																																																																																																																																																																																																																																																																																																																																																																																																														
	N	%	N	%	N	%	N	%	N	%	N	%	N	%	N	%	N	%	N	%	N	%	N	%	N	%	N	%	N	%	N	%	N	%	N	%	N	%	N	%	N	%	N	%	N	%	N	%	N	%	N	%	N	%	N	%	N	%	N	%	N	%	N	%	N	%	N	%	N	%	N	%	N	%	N	%	N	%	N	%	N	%	N	%	N	%	N	%	N	%	N	%	N	%	N	%	N	%	N	%	N	%	N	%	N	%	N	%	N	%	N	%	N	%	N	%	N	%	N	%	N	%	N	%	N	%	N	%	N	%	N	%	N	%	N	%	N	%	N	%	N	%	N	%	N	%	N	%	N	%	N	%	N	%	N	%	N	%	N	%	N	%	N	%	N	%	N	%	N	%	N	%	N	%	N	%	N	%	N	%	N	%	N	%	N	%	N	%	N	%	N	%	N	%	N	%	N	%	N	%	N	%	N	%	N	%	N	%	N	%	N	%	N	%	N	%	N	%	N	%	N	%	N	%	N	%	N	%	N	%	N	%	N	%	N	%	N	%	N	%	N	%	N	%	N	%	N	%	N	%	N	%	N	%	N	%	N	%	N	%	N	%	N	%	N	%	N	%	N	%	N	%	N	%	N	%	N	%	N	%	N	%	N	%	N	%	N	%	N	%	N	%	N	%	N	%	N	%	N	%	N	%	N	%	N	%	N	%	N	%	N	%	N	%	N	%	N	%	N	%	N	%	N	%	N	%	N	%	N	%	N	%	N	%	N	%	N	%	N	%	N	%	N	%	N	%	N	%	N	%	N	%	N	%	N	%	N	%	N	%	N	%	N	%	N	%	N	%	N	%	N	%	N	%	N	%	N	%	N	%	N	%	N	%	N	%	N	%	N	%	N	%	N	%	N	%	N	%	N	%	N	%	N	%	N	%	N	%	N	%	N	%	N	%	N	%	N	%	N	%	N	%	N	%	N	%	N	%	N	%	N	%	N	%	N	%	N	%	N	%	N	%	N	%	N	%	N	%	N	%	N	%	N	%	N	%	N	%	N	%	N	%	N	%	N	%	N	%	N	%	N	%	N	%	N	%	N	%	N	%	N	%	N	%	N	%	N	%	N	%	N	%	N	%	N	%	N	%	N	%	N	%	N	%	N	%	N	%	N	%	N	%	N	%	N	%	N	%	N	%	N	%	N	%	N	%	N	%	N	%	N	%	N	%	N	%	N	%	N	%	N	%	N	%	N	%	N	%	N	%	N	%	N	%	N	%	N	%	N	%	N	%	N	%	N	%	N	%	N	%	N	%	N	%	N	%	N	%	N	%	N	%	N	%	N	%	N	%	N	%	N	%	N	%	N	%	N	%	N	%	N	%	N	%	N	%	N	%	N	%	N	%	N	%	N	%	N	%	N	%	N	%	N	%	N	%	N	%	N	%	N	%	N	%	N	%	N	%	N	%	N	%	N	%	N	%	N	%	N	%	N	%	N	%	N	%	N	%	N	%	N	%	N	%	N	%	N	%	N	%	N	%	N	%	N	%	N	%	N	%	N	%	N	%	N	%	N	%	N	%	N	%	N	%	N	%	N	%	N	%	N	%	N	%	N	%	N	%	N	%	N	%	N	%	N	%	N	%	N	%	N	%	N	%	N	%	N	%	N	%	N	%	N	%	N	%	N	%	N	%	N	%	N	%	N	%	N	%	N	%	N	%	N	%	N	%	N	%	N	%	N	%	N	%	N	%	N	%	N	%	N	%	N	%	N	%	N	%	N	%	N	%	N	%	N	%	N	%	N	%	N	%	N	%	N	%	N	%	N	%	N	%	N	%	N	%	N	%	N	%	N	%	N	%	N	%	N	%	N	%	N	%	N	%	N	%	N	%	N	%	N	%	N	%	N	%	N	%	N	%	N	%	N	%	N	%	N	%	N	%	N	%	N	%	N	%	N	%	N	%	N	%	N	%	N	%	N	%	N	%	N	%	N	%	N	%	N	%	N	%	N	%	N	%	N	%	N	%	N	%	N	%	N	%	N	%	N	%	N	%	N	%	N	%	N	%	N	%	N	%	N	%	N	%	N	%	N	%	N	%	N	%	N	%	N	%	N	%	N	%	N	%	N	%	N	%	N	%	N	%	N	%	N	%	N	%	N	%	N	%	N	%	N	%	N	%	N	%	N	%	N	%	N	%	N	%	N	%	N	%	N	%	N	%	N	%	N	%	N	%	N	%	N	%	N	%	N	%	N	%	N	%	N	%	N	%	N	%	N	%	N	%	N	%	N	%	N	%	N	%	N	%	N	%	N	%	N	%	N	%	N	%	N	%	N	%	N	%	N	%	N	%	N	%	N	%	N	%	N	%	N	%	N	%	N	%	N	%	N	%	N	%	N	%	N	%	N	%	N	%	N	%	N	%	N	%	N	%	N	%	N	%	N	%	N	%	N	%	N	%	N	%	N	%	N	%	N	%	N	%	N	%	N	%	N	%	N	%	N	%	N	%	N	%	N	%	N	%	N	%	N	%	N	%	N	%	N	%	N	%	N	%	N	%	N	%	N	%	N	%	N	%	N	%	N	%	N	%	N	%	N	%	N	%	N	%	N	%	N	%	N	%	N	%	N	%	N	%	N	%	N	%	N	%	N	%	N	%	N	%	N	%	N	%	N	%	N	%	N	%	N	%	N	%	N	%	N	%	N	%	N	%	N	%	N	%	N	%	N	%	N	%	N	%	N	%	N	%	N	%	N	%	N	%	N	%	N	%	N	%	N	%	N	%	N	%	N	%	N	%	N	%	N	%	N	%	N	%	N	%	N	%	N	%	N	%	N	%	N	%	N	%	N	%	N	%	N	%	N	%	N	%	N	%	N	%	N	%	N	%	N	%	N	%	N	%	N	%	N	%	N	%	N	%	N	%	N	%	N	%	N	%	N	%	N	%	N	%	N	%	N	%	N	%	N	%	N	%	N	%	N	%	N	%	N	%	N	%	N	%	N	%	N	%

At Lakeside Outreach School, we are committed to continuous improvement and celebrating achievements within our learning community. It is encouraging to see that our efforts are recognized, as 100% of the 19 students who responded to surveys reported that the school has improved. With parent data now available in 2025, this clearly shows an even clearer picture of the positive impact of our initiatives. Over the years, we have focused on enhancing asynchronous courses to better support students' learning and success. We also revamped the school nutrition program to intentionally support high school credit completion while providing daily meals to students. Additionally, we highlight school achievements in a monthly newsletter and on social media, and collaborating with High Prairie School Division's maintenance, technology, and safety teams to ensure our facility is safe, accessible, and fully connected. These efforts demonstrate our commitment to providing a high-quality learning environment and fostering success for every student in our school.

High School to Post-secondary Transition Rate – Measure Details

High school to post-secondary transition rate of students within four and six years of entering Grade 10.

	School										Authority										Province																																																																																																																																																																																																																																																																																																																																																																																																																																																																																																																																																																																																																																																																																																																																																																																																																																																																																																																																																																																																									
	2020					2021					2022					2023					2024					2020					2021					2022					2023					2024																																																																																																																																																																																																																																																																																																																																																																																																																																																																																																																																																																																																																																																																																																																																																																																																																																																																																																																																																																																
	N		%		N	N		%		N	N		%		N	N		%		N	N		%		N	N		%		N	N		%		N	N		%		N	N		%		N	N		%		N	N		%		N	N		%		N	N		%		N	N		%		N	N		%		N	N		%		N	N		%		N	N		%		N	N		%		N	N		%		N	N		%		N	N		%		N	N		%		N	N		%		N	N		%		N	N		%		N	N		%		N	N		%		N	N		%		N	N		%		N	N		%		N	N		%		N	N		%		N	N		%		N	N		%		N	N		%		N	N		%		N	N		%		N	N		%		N	N		%		N	N		%		N	N		%		N	N		%		N	N		%		N	N		%		N	N		%		N	N		%		N	N		%		N	N		%		N	N		%		N	N		%		N	N		%		N	N		%		N	N		%		N	N		%		N	N		%		N	N		%		N	N		%		N	N		%		N	N		%		N	N		%		N	N		%		N	N		%		N	N		%		N	N		%		N	N		%		N	N		%		N	N		%		N	N		%		N	N		%		N	N		%		N	N		%		N	N		%		N	N		%		N	N		%		N	N		%		N	N		%		N	N		%		N	N		%		N	N		%		N	N		%		N	N		%		N	N		%		N	N		%		N	N		%		N	N		%		N	N		%		N	N		%		N	N		%		N	N		%		N	N		%		N	N		%		N	N		%		N	N		%		N	N		%		N	N		%		N	N		%		N	N		%		N	N		%		N	N		%		N	N		%		N	N		%		N	N		%		N	N		%		N	N		%		N	N		%		N	N		%		N	N		%		N	N		%		N	N		%		N	N		%		N	N		%		N	N		%		N	N		%		N	N		%		N	N		%		N	N		%		N	N		%		N	N		%		N	N		%		N	N		%		N	N		%		N	N		%		N	N		%		N	N		%		N	N		%		N	N		%		N	N		%		N	N		%		N	N		%		N	N		%		N	N		%		N	N		%		N	N		%		N	N		%		N	N		%		N	N		%		N	N		%		N	N		%		N	N		%		N	N		%		N	N		%		N	N		%		N	N		%		N	N		%		N	N		%		N	N		%		N	N		%		N	N		%		N	N		%		N	N		%		N	N		%		N	N		%		N	N		%		N	N		%		N	N		%		N	N		%		N	N		%		N	N		%		N	N		%		N	N		%		N	N		%		N	N		%		N	N		%		N	N		%		N	N		%		N	N		%		N	N		%		N	N		%		N	N		%		N	N		%		N	N		%		N	N		%		N	N		%		N	N		%		N	N		%		N	N		%		N	N		%		N	N		%		N	N		%		N	N		%		N	N		%		N	N		%		N	N		%		N	N		%		N	N		%		N	N		%		N	N		%		N	N		%		N	N		%		N	N		%		N	N		%		N	N		%		N	N		%		N	N		%		N	N		%		N	N		%		N	N		%		N

Lakeside Outreach School faces unique challenges in supporting students, as our high school transition rates have historically been lower than the provincial average. Many of our students encounter personal, social, or family circumstances that make traditional school settings difficult to navigate, including balancing work, family responsibilities, or overcoming previous gaps in learning. Despite these challenges, our school offers unique programming designed to meet students where they are and provide multiple pathways to success. This includes flexible asynchronous courses, personalized learning plans, and hands-on support that allow students to complete credits at their own pace. In addition, we provide wrap-around services such as nutrition programs, mental health supports, and skill-building activities to address barriers outside of academics. While our transition rates may appear lower on paper, these tailored programs ensure that students are supported to graduate, continue their education, or successfully enter the workforce, reflecting the school's commitment to equity, accessibility, and meaningful student success.

Work Preparation – Measure Details

Percentage of teachers and parents who agree that students are taught attitudes and behaviours that will make them successful at work when they finish school.

	School										Authority										Province																																																																																																																																																																																																																																																																																																																																																																																																																																																																																																																																																																																																																																																																																																																																																																																																																																																																																																																											
	2021					2022					2023					2024					2025					2021					2022					2023					2024					2025																																																																																																																																																																																																																																																																																																																																																																																																																																																																																																																																																																																																																																																																																																																																																																																																																																																																																																		
	N		%		Measure Evaluation	N		%		Achievement	N		%		Improvement	N		%		Overall	N		%		N	%		N	%		N	%		N	%		N	%		N	%		N	%		N	%		N	%		N	%		N	%		N	%		N	%		N	%		N	%		N	%		N	%		N	%		N	%		N	%		N	%		N	%		N	%		N	%		N	%		N	%		N	%		N	%		N	%		N	%		N	%		N	%		N	%		N	%		N	%		N	%		N	%		N	%		N	%		N	%		N	%		N	%		N	%		N	%		N	%		N	%		N	%		N	%		N	%		N	%		N	%		N	%		N	%		N	%		N	%		N	%		N	%		N	%		N	%		N	%		N	%		N	%		N	%		N	%		N	%		N	%		N	%		N	%		N	%		N	%		N	%		N	%		N	%		N	%		N	%		N	%		N	%		N	%		N	%		N	%		N	%		N	%		N	%		N	%		N	%		N	%		N	%		N	%		N	%		N	%		N	%		N	%		N	%		N	%		N	%		N	%		N	%		N	%		N	%		N	%		N	%		N	%		N	%		N	%		N	%		N	%		N	%		N	%		N	%		N	%		N	%		N	%		N	%		N	%		N	%		N	%		N	%		N	%		N	%		N	%		N	%		N	%		N	%		N	%		N	%		N	%		N	%		N	%		N	%		N	%		N	%		N	%		N	%		N	%		N	%		N	%		N	%		N	%		N	%		N	%		N	%		N	%		N	%		N	%		N	%		N	%		N	%		N	%		N	%		N	%		N	%		N	%		N	%		N	%		N	%		N	%		N	%		N	%		N	%		N	%		N	%		N	%		N	%		N	%		N	%		N	%		N	%		N	%		N	%		N	%		N	%		N	%		N	%		N	%		N	%		N	%		N	%		N	%		N	%		N	%		N	%		N	%		N	%		N	%		N	%		N	%		N	%		N	%		N	%		N	%		N	%		N	%		N	%		N	%		N	%		N	%		N	%		N	%		N	%		N	%		N	%		N	%		N	%		N	%		N	%		N	%		N	%		N	%		N	%		N	%		N	%		N	%		N	%		N	%		N	%		N	%		N	%		N	%		N	%		N	%		N	%		N	%		N	%		N	%		N	%		N	%		N	%		N	%		N	%		N	%		N	%		N	%		N	%		N	%		N	%		N	%		N	%		N	%		N	%		N	%		N	%		N	%		N	%		N	%		N	%		N	%		N	%		N	%		N	%		N	%		N	%		N	%		N	%		N	%		N	%		N	%		N	%		N	%		N	%		N	%		N	%		N	%		N	%		N	%		N	%		N	%		N	%		N	%		N	%		N	%		N	%		N	%		N	%		N	%		N	%		N	%		N	%		N	%		N	%		N	%		N	%		N	%		N	%		N	%		N	%		N	%		N	%		N	%		N	%		N	%		N	%		N	%		N	%		N	%		N	%		N	%	

Many students in our region pursue a wide range of paths after high school, including apprenticeships, entering the workforce, academic upgrading, taking a gap year, or staying home to support their families. These realities influence our results on this measure, where we currently perform below the school authority. To improve transition rates, we remain committed to providing personalized, wrap-around support. We also continue offering Jr. PD opportunities, such as First Aid training, to help prepare students for employment. Our career coach supports students pursuing post-secondary options, promotes dual-credit and trades exploration, and coordinates campus tours. Last year, students participated in Skills Canada. These initiatives collectively aim to ensure every student is equipped and confident to pursue their next steps successfully.